



Centre for Climate
and Energy Analyses

AFTER LIFE PLAN

LIFE CLIMATE CAKE PL

LIFEClimateCAKEPL

INFORMATION ABOUT THE PROJECT

▶ LIFE16 - Information and management

- ▶ **TITLE:** The system of providing and disseminating information in order to support the strategic implementation of climate policy (LIFE Climate CAKE PL - LIFE16 GIC/PL/000031)
- ▶ **Responsible Party: (BENEFICIARY):** Institute of Environmental Protection - National Research Institute (IOŚ-PIB)/ The National Centre for Emissions Management (KOBiZE)
- ▶ **Duration:** 1 September 2017 – 30 June 2022
 - ▶ **Budget total:** € 2 395 706
 - ▶ **Eligible costs:** € 2 379 306
 - ▶ **Funding from LIFE:** € 1 427 583
 - ▶ **Funding from NFOŚiGW:** € 490 005
 - ▶ **Beneficiary's own contribution:** € 478 118
- ▶ **Permanent effects of the Project:** Centre for Climate and Energy Analysis (CAKE) - a set of model tools and a team of specialists capable of carrying out analyses of climate and energy policy.

Contact:

Adres: Chmielna 132/134,
00-805 Warszawa
WWW: www.climatecake.pl
E-mail: cake@kobize.pl
Tel.: +48 22 56 96 570
Twitter: @climate_cake



The project "The system of providing and disseminating information in order to support the strategic implementation of climate policy (LIFE Climate CAKE PL)" is co-financed from the EU LIFE programme and the resources of the National Fund for Environmental Protection and Water Management.



List of Contents

1. INTRODUCTION – AFTER LIFE PLAN OBJECTIVES **Błąd! Nie zdefiniowano zakładki.**
2. OBJECTIVES AND SCOPE OF THE PROJECT **Błąd! Nie zdefiniowano zakładki.**
3. PROJECT ACTIVITIES AND RESULTS 5
4. SWOT ANALYSIS AT THE END OF THE PROJECT **Błąd! Nie zdefiniowano zakładki.**
5. POST PROJECT ACTIVITIES – DISSEMINATION OF RESULTS AND REPLICATION 9

1. INTRODUCTION – AFTER LIFE PLAN OBJECTIVES AND SCOPE OF THE PROJECT

The After LIFE Plan is intended to ensure and continue the dissemination of knowledge and information about the effects of the activities implemented under the project, their significance and usefulness, thereby maximizing their demonstrative and useful value after the project ends. It primarily describes the approach and means by which the project beneficiary intends to transfer its experience and exploit the created knowledge and skills potential for up to 5 years after the end of the project, thereby demonstrating the sustainability of its effects.

2. PROJECT ACTIVITIES AND RESULTS

The main objective of the LIFE Climate CAKE PL project was to build a sustainable comprehensive system for creating and providing information on the effects of climate and energy policy for improving the effectiveness and efficiency of its implementation, including:

- ▶ Supporting the decision-making process and enhancing the knowledge capacity and competence of state administrations dealing with climate and energy policy issues;
- ▶ Creation within the KOBiZE of a Centre for Climate and Energy Analysis (CAKE) - a team of experts who, through the use and further improvement of the analytical tools built under the project, permanently produce and provide knowledge to support the decision-making process;
- ▶ Developing networks and communication channels for continuous access and dissemination of project results and their replication.

The project was implemented by a beneficiary based in Warsaw, Poland, nevertheless the scope of activities carried out and their impact covered the entire energy and climate policy of the European Union, including the effects on individual member states. The results of the work were used primarily by the target group defined in the project - public administration involved in the development and implementation of energy and climate policy. In addition, an energy transition manual for local governments was prepared, in which the results of the analyses were used. The results of the project's work were also made available to a wide range of stakeholders in the European Union.

3. PROJECT ACTIVITIES AND RESULTS

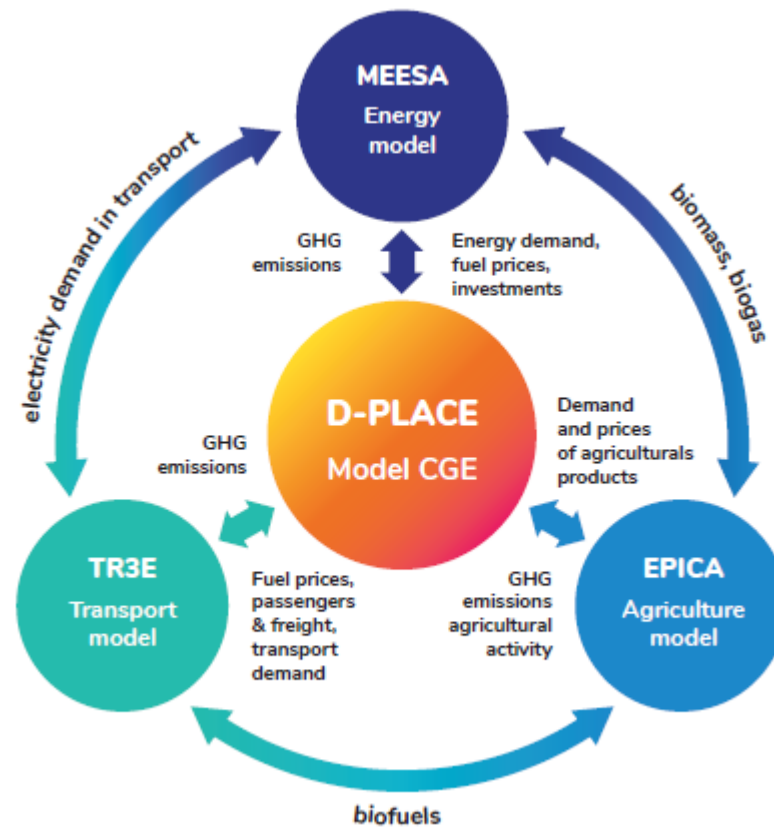
The project's activities included primarily:

- ▶ Building a comprehensive and consistent analytical toolkit for assessing the measures proposed at the levels of Member States and the EU, including their sectoral dimension;
- ▶ Developing a high-quality information about the impacts of measures implemented and planned under the EU energy and climate policies and provide it to representatives of public administration, business entities and the public;
- ▶ Raising the environmental awareness of the public, with particular consideration given to the addressees of climate and energy policies, through wide dissemination of high-quality information;
- ▶ Centre for Climate and Energy Analyses (CAKE) is established to guarantee the sustainability of the effects developed under the project and the continuation of activities which would use the potential built.

The activities carried out under the LIFE Climate CAKE PL project can be divided into three stages, and although they followed a logical sequence according to the schedule, each of them is still continuing.

- ▶ **STAGE I** is the construction and continuous improvement of the analytical modelling tools needed to create knowledge about the effects of climate and energy policies. At the heart of the analytical workshop is the CGE general equilibrium model (d-PLACE), which, through a linking module, interacts with three sectoral models: the energy model (MEESA), the transportation model (TR3E) and the agricultural model (EPICA). Model integration, which involves exchanging information and results between models and then using them for subsequent calculations, is one of the activities that create significant added value to the EU's analytical capabilities. This comprehensive and coherent set of tools allows for the correct assessment of the impact of implemented and planned energy and climate policy measures, and consequently supports the improvement of the efficiency and effectiveness of achieving climate and environmental goals at the national and community levels.

An important part of Stage was the establishment of the Centre for Climate and Energy Analysis (CAKE) within the structure of the beneficiary, which is primarily a team of experts who, by using and further improving the analytical tools, networks and communication channels built in the project, can further sustainably generate and provide knowledge to support the decision-making process. The CAKE team at the time of the project's completion is 19 people, including 13 modelling experts, both specialists permanently employed at IOŚ-PIB and KOBiZE, as well as permanently cooperating experts and scientists from universities and research centres.



Graph. 1 Models created in LIFE Climate CAKE PL

- **STAGE II** is focused on the use of created potential to conduct a series of analyses and, through them, produce high-quality information on the effects of implemented and planned solutions, tools and decisions related to EU climate and energy policy. The results of the conducted analyses were published in 14 research reports made available not only to the target group, but to all those interested in knowledge in this area. In order to meet the demands for transparency, accessibility and replication, the technical documentation of the built analytical tools was also published, which enables their use in other teams and centers. It is worth noting that the potential generated by the project makes it possible to address challenges that were not possible to define at the time the project was prepared. At the time, the European Green Deal strategy published in 2019 and the related "Fit for 55" package were still unknown, but the Centre for Climate and Energy Analysis was nevertheless able to take up the challenge of providing analyses on the impacts of the proposed solutions and make use of that knowledge in the negotiation and decision-making process. In this context, noteworthy is the report published by CAKE in June 2021 titled. "Poland net-zero 2050: A roadmap toward achievement of the EU climate policy goals in Poland by 2050" which analyses the possibilities of a transition to a climate-neutral economy in Poland and made an assessment of the necessary transformation that covers all sectors of the economy, with a detailed analysis of energy, transport and agriculture.

- ▶ **STAGE III** is a parallel effort to disseminate the generated knowledge and information, including both active dissemination to the target group involved in the implementation of the climate and energy policy, and active outreach to all stakeholders of such policies. Since the beginning of the project's implementation, the dedicated website (www.climatecake.pl) was established, where all generated results and all information about implemented activities are constantly available. In addition, other communication channels are being used, including social media (the project's Twitter and LinkedIn accounts), leaflets and brochures available electronically and in paper form, publications in professional journals, organization and participation in conferences, seminars, workshops and webinars. Dissemination of information about the project and its effects is also media presence, including interviews in the press and electronic media (television, internet channels).

Generally, the results of the project can be concluded as follows:

- ▶ Establishment and maintenance of advanced analytical tools and a team of high-level specialists to assess the impact of climate and energy policy, primarily in dimensions relevant to Poland.
- ▶ Completion of the information gap by providing decision-makers and other stakeholders engaged in climate and energy policy issues, in particular in the transformation of the Polish economy to a low-carbon mode, with high-quality knowledge as a significant support in decision-making processes, thereby contributing to the improvement of the efficiency and effectiveness of the achievement of emission reduction targets.
- ▶ Raising the potential for knowledge and capabilities in the private sector through conscious engagement of stakeholders and civil society in the process of EU climate policy implementation and its impact on detailed solutions.
- ▶ Improve the environmental/climate awareness of the society, with a particular focus on climate/energy policy.
- ▶ Dissemination of knowledge and analysis results to a wide audience through available communication channels.
- ▶ The recognition and appreciation of Poland's analytical potential not only in the European Union, but also around the world.
- ▶ Creation of the opportunity for further development and the use of the established potential of knowledge and capabilities in order to take on new challenges.

4. SWOT ANALYSIS AT THE END OF THE PROJECT

The SWOT analysis was performed at the end of the project to better define the way forward. This assessment was done in particular to ensure the sustainability of the project's effects and their replication.

<p>STRENGTHS</p> <ul style="list-style-type: none"> • CAKE – integration of activities within the Centre for Climate and Energy Analyses • CAKE's team of modelling experts • Trademark recognition of CAKE and team members • Network of institutional and individual links • The location of CAKE activities in KOBIZE– an entity that statutorily supports the substantive activities of the administration (mainly Ministry of Climate and Environment) • Experience in acquiring and implementing projects (including LIFE, Horizon Europe) • Access to knowledge and information on work on the development and implementation of EU policies 	<p>WEAKNESSES</p> <ul style="list-style-type: none"> • Limited possibilities to expand the team of CAKE specialists (employment issues) • Broad scope of work and responsibilities of the team responsible for the operation of CAKE • Constraints arising from the institutional location of CAKE and the related limitation of independence • Limitations related to formal and legal requirements and procedures
<p>OPPORTUNITIES</p> <ul style="list-style-type: none"> • Increasing importance and dynamics of energy and climate policy • Growing demand for knowledge and analysis related to assessing the impact of EU energy and climate policies • Growing interest among energy and climate policy stakeholders and the general public in reliable information about the effects • Increasing importance of climate policy impact assessment issues in climate policy research funding programs 	<p>THREATS</p> <ul style="list-style-type: none"> • Dynamics of change in the development and implementation of EU energy and climate policy (impact on the speed of response) • New problems and challenges in politics and the global economy, affecting energy and climate policy • Uncertainty concerning the availability of funds to finance development of CAKE • Competition from other think tanks and the associated reduction in the availability of specialists

5. POST-PROJECT ACTIVITIES

- DISSEMINATION OF EFFECTS AND REPLICATION

5.1 Continued operation of the Climate and Energy Analysis Centre (CAKE)

DESCRIPTION: The operation and development of CAKE established under the LIFE Climate CAKE PL project is planned to be long-term. This include both maintaining the employment of modelling experts and the analytical tools and workshop built. Additionally, CAKE functioning is understood as the implementation of tasks of a similar nature in comparison to those performed under the project, i.e. analysis of the results of implemented and proposed energy and climate policy solutions. The subject matter of the analyses performed will be determined by the current development and agenda of EU policy, including proposals presented by EU institutions and member states in this regard.

RESPONSIBLE ENTITY: The National Centre for Emission Management / Institute of Environmental Protection - National Research Institute (KOBiZE/IOŚ-PIB).

FINANCING: Employment of at least 60% of the existing team of experts, constituting the personal core of CAKE, will be financed from the own resources of the beneficiary (KOBiZE/IOŚ-PIB). The employment of the remaining experts will be financed from funds raised for the implementation of projects that are part of the specifics of CAKE's activities, including in particular the LIFE and Horizon Europe programs.

Currently CAKE is using funds from the LIFE VII EW 2050 project ("*The impact assessment of the EU Emission Trading System with the long-term vision for a climate neutral economy by 2050*", LIFE 19GIC/PL/001205), implemented independently by KOBiZE/IOŚ-PIB, and is a co-beneficiary under the ECEMF-European Climate and Energy Modelling Forum project funded by the Horizon 2020 Program. The ongoing and planned projects under CAKE activities are presented in Table No. 1.

PERIOD: at least 5 years, i.e. until 2027 (intended to be indefinite).

5.2 Website

DESCRIPTION: The website www.climatecake.pl was originally created for the LIFE Climate CAKE PL project primarily to share the analyses being developed, but also to provide broader information to wider audience about the project. Currently, the website is used to disseminate information about CAKE's activities, including those of other projects mentioned above, and to make the resulting products available. The website continues to have a fully functional area dedicated to the LIFE Climate CAKE PL project with all products produced with the possibility of downloading them. Management of the website remains at the responsibility of the Strategy, Analysis and Auction Unit in KOBIZE, which is responsible for coordinating the implementation of the project within the structure of the beneficiary.

RESPONSIBLE ENTITY: The National Centre for Emission Management (KOBIZE)/ Institute of Environmental Protection - National Research Institute (KOBiZE/IOŚ-PIB).

FINANCING: own resources of the beneficiary (KOBiZE/IOŚ-PIB)

PERIOD: at least 5 years, i.e. until 2027 (intended to be indefinite)

5.3 Social media communication channels

DESCRIPTION: It is planned to maintain and actively use the [Twitter](#) and [LinkedIn](#) channels created to promote and share information about project activities. The content and posts shared on the aforementioned channels will be maintained, while the channels themselves will continue to be used to disseminate information about CAKE activities. Management of the website will remain the responsibility of the Strategy, Analysis and Auction Unit in KOBIZE, which coordinates the implementation of the project within the beneficiary's structure.

RESPONSIBLE ENTITY: The National Centre for Emission Management (KOBIZE)/ Institute of Environmental Protection - National Research Institute (KOBiZE/IOŚ-PIB).

FINANCING: own resources of the beneficiary (KOBiZE/IOŚ-PIB)

PERIOD: at least 5 years, i.e. until 2027 (intended to be indefinite)

5.4. Organization and active participation in seminars and workshops

DESCRIPTION: In addition to the continuous dissemination of the results of the analyses performed at the Centre for Climate and Energy Analysis, with regard to the LIFE Climate CAKE PL project, this activity is primarily aimed at enabling the use and replication of the know-how generated by the project. Additionally to the permanent availability of the technical documentation of the modelling tools on the CAKE website, this activity will allow active promotion and sharing the knowledge of the analytical tools and workshop and assistance to those interested in the further use of the results of the project.

RESPONSIBLE ENTITY: The National Centre for Emission Management (KOBIZE)/ Institute of Environmental Protection - National Research Institute (KOBIZE/IOŚ-PIB).

Tab. 1. CAKE current and planned projects

LIFE Climate CAKE PL	LIFE VIEW 2050	ECEMF	ADJUST	UPTAKE
<i>The system of providing and disseminating information in order to support the strategic implementation of climate policy</i>	<i>The impact assessment of the EU Emission Trading System with the long-term vision for a climate neutral economy by 2050</i>	<i>European Climate and Energy Modelling Forum</i>	<i>Advancing the understanding of challenges, policy options and measures to achieve a JUST EU energy transition</i>	<i>Bridging current knowledge gaps to enable the UPTAKE of carbon dioxide removal methods</i>
LIFE 2017 -2022	LIFE 2020 - 2023	Horizon 2020 2021 - 2025	Horizon 2020 2022 -2026	Horizon 2020 2023 -2027
<ul style="list-style-type: none"> • Development a low-carbon pathway for reducing GHG emissions in the energy, transport and agriculture sectors • Optimize reduction efforts in non-ETS sectors to improve the effectiveness of achieving policy targets for 2030 	<ul style="list-style-type: none"> • EU ETS Interactions with other policies: RES, energy efficiency • New sectors in the EUETS: transport, agriculture, buildings, maritime • EU ETS interaction with other ETS systems and CO2 sectors 	<ul style="list-style-type: none"> • Provide analysis on the feasibility of achieving climate neutrality in the EU by using a wide range of modelling tools (about 20) 	<ul style="list-style-type: none"> • Development of new research methods to structure the debate on a just transition and develop concrete solutions to support a just transition in the EU 	<ul style="list-style-type: none"> • Development of a new generation of tools for designing decarbonisation pathways using technologies to absorb CO2 from the atmosphere (CDR technologies)
IOŚ-PIB/KOBIZE	IOŚ-PIB/KOBIZE	Consortium: KTH, CMCC, IIASA, PIK, TU Wien, e-think, TNO, Fraunhofer ISI, E3M, PBL, Artelys, Comillas, TU Delft, University of Melbourne and IOŚ-PIB/KOBIZE.	Consortium: CMCC, BC3, FIRSCH, UCL, MCC (Mercator Institute), PSV, IEEP, London School of Economics, OEFSE, E3M, IOŚ-PIB/KOBIZE.	Consortium: CMCC, PIK, MCC (Mercator Institute), IIASA, PBL, E3-M, University of Strathclyde University of Aberdeen, SWP, ETH Zurich, Aarhus University, IfW, PSI, University of Hamburg, Chalmers University of Technology, IKEM, Reform Institute, IOŚ-PIB/ KOBIZE.

5.5. Reference indicators for the operation of the Centre for Climate and Energy Analyses after the completion of the LIFE Climate CAKE PL project

The table below shows the indicators for evaluating the achievement of the objectives set out in the After LIFE plan. The achievement of the established values depends on the realization of the assumptions of the necessary measures.

Table 2. Reference indicators of CAKE's performance in the 5-year period after the project's completion

Indicator	Value after 5 years	Comments
Number of climate policy modelling experts	6	The proposed value is sufficient to maintain and develop model tools and perform analytical tasks. The indicator applies to full-time employees orz permanent associates.
Analyses of the effects of climate and energy policy prepared for government administration	5	At least one analysis per year is expected to be prepared.
Publication of research reports and analytical studies on the project website (climatecake.pl)	8	At least one publicly available research report or document per year is expected to be published.
Organization of an event at which the results of CAKE analysis will be presented	5	At least one analysis per year is expected to be prepared (seminar, workshop).
Number of strategic documents in which the results of CAKE analyses will be used	3	This applies to documents prepared by the government administration and other relevant climate and energy policy stakeholders.



**National Centre for
Emissions Management**
Institute of Environmental Protection
National Research Institute

CAKE Centre for Climate
and Energy Analyses



Project entitled „System of providing and disseminating information in order to support the strategic implementation of climate policy” LIFE Climate CAKE PL (LIFE16 GIC/PL/000031) is co- financed from the EU funds from the LIFE Programme and from the National Fund for Environmental Protection and Water Management.

